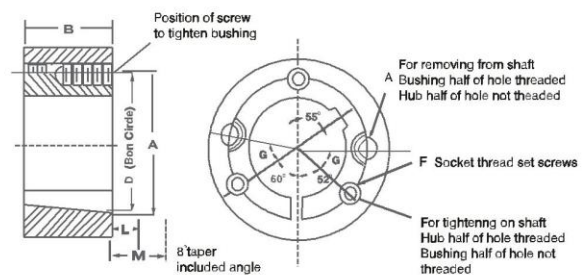


1008 – 3030 Taper Bushings

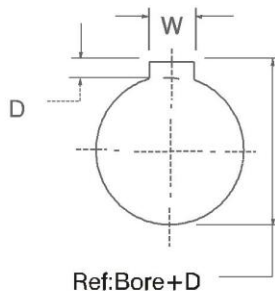
BUSH NO	SCREW TIGHTENING TORQUES(Nm)	SCREW	
		QUANTITY	SIZE
1008	5.6	2	1/4"
1108			BSW
1210	20	2	3/8"
1215			BSW
1310	20	2	3/8"
1315			BSW
1610	20	2	3/8"
1615			BSW
2012	31	2	7/16"
2517			BSW
3020	90	2	5/8"
3030			BSW
3535	112	3	1/2"
4040			BSW
4545	192	3	3/4"
5050			BSW

BUSH NO	A	B	D	Set Screws
1008	1.386	7/8	1 21/64	1/4x1/2
1108	1.511	7/8	1 29/64	1/4x1/2
1210	1 7/8	1	1 3/4	3/8x5/8
1215	1 7/8	1 1/2	1 3/4	3/8x5/8
1310	2	1	1 7/8	3/8x5/8
1610	2 1/4	1	2 1/8	3/8x5/8
1615	2 1/4	1 1/2	2 1/8	3/8x5/8
2012	2 3/4	1 1/4	2 5/8	7/16x7/8
2517	3 3/8	1 3/4	3 1/4	1/2x1
2525	3 3/8	2 1/2	3 1/4	1/2x1
3020	4 1/4	2	4	5/8x1 1/4
3030	4 1/4	3	4	5/8x1 1/4

3535 – 5050 sizes



Two screws required
Three screws required



Ref: Bore + D
MM Bore Key way dimensions conform to ISO standard
Depth measured at centerline

1008 – 5050 Taper Bushings

BUSH NO	A	B	D	Set Screws	G
3535	5	3 1/2	4.83	1/2x1 1/2	40°
4040	5 3/4	4	5.54	5/8x1 3/4	40°
4545	6 3/8	4 1/2	6.13	3/4x2	40°
5050	7	5	6.72	7/8x2 1/4	37°

A

DIN 6885 GB 1095-1979

Bush No	Bore	Bushing Keyway	Bush No	Bore	Bushing Keyway	Bush No	Bore	Bushing Keyway	Bush No	Bore	Bushing Keyway	Bush No	Bore	Bushing Keyway	Bush No	Bore	Bushing Keyway		
1008	10	3x1.40	1610	14	5x2.30	2517	20	6x2.80	3020	25	8x3.30	3535	35	10x3.30	4545	55	16x4.30		
	11	4x1.80		16			22			28			38			40		60	18x4.40
	12			18			24			30			42			42	12x3.30	65	
	14	5x2.30		19	6x2.80		25	8x3.30		32			35	10x3.30		38		45	20x4.90
	16			20			28			35			40			42	12x3.30	48	14x3.80
	18			22			30			38			45			50	16x4.30	55	16x4.30
	19	6x2.80		25	8x3.30		32			40			48	14x3.80		55		60	18x4.40
	20			28			35	10x3.30		42	12x3.30		50			65	18x4.40	70	20x4.90
	22			30			40			45			55	16x4.30		75	20x4.90	85	22x5.40
	24	8x2.00		32	10x3.30		42			50			60			85	22x5.40	90	25x5.40
25	8x1.30	35		45		55	16x4.30	60		90									
10	3x1.40	38		48	14x3.80	60		70	20x4.90										
11		40	12x3.30	50		65	18x4.40	75											
12	4x1.80	42	12x2.20	55	16x4.30	70													
14				60	18x4.40														
16	5x2.30																		
18																			
19																			
20	6x2.80																		
22																			
24																			
25	8x3.30	14	5x2.30																
28		16																	
28	8x2.00	18																	
11		19	6x2.80																
12	4x1.80	20																	
14		22																	
16	5x2.30	24																	
18		25	8x3.30																
19		28																	
20	6x2.80	30																	
22		32																	
24		35	10x3.30																
25		38																	
28	8x3.30	40																	
30		42	12x2.20																
32	10x3.30																		
11																			
12	4x1.80																		
14																			
16	5x2.30																		
18																			
19																			
20	6x2.80																		
22																			
24																			
25																			
28	8x3.30																		
30																			
32	10x3.30																		
11																			
12	4x1.80																		
14																			
16	5x2.30																		
18																			
19																			
20	6x2.80																		
22																			
24																			
25																			
28	8x3.30																		
30																			
32	10x3.30																		
14																			
16	5x2.30																		
18																			
19																			
20	6x2.80																		
22																			
24																			
25																			
28	8x3.30																		
30																			
32	10x3.30																		
35																			